

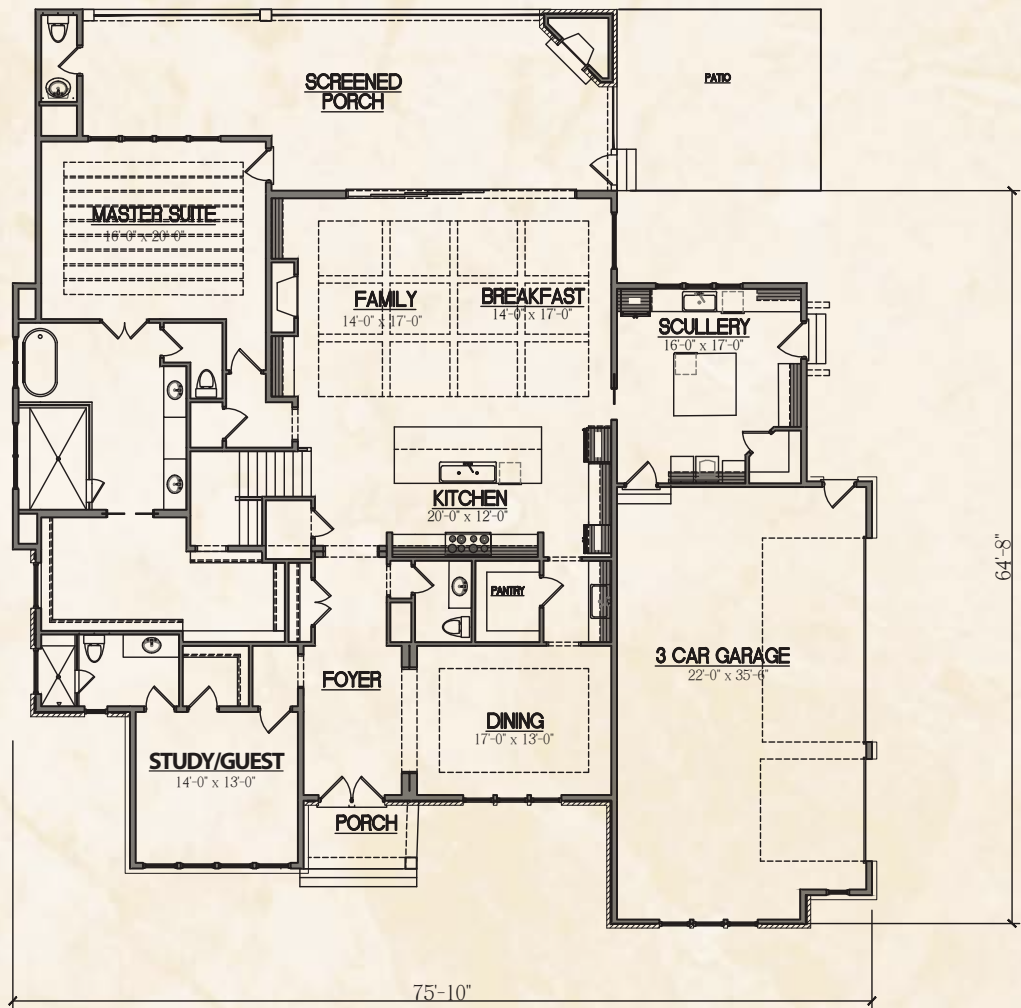


AVALAIRE

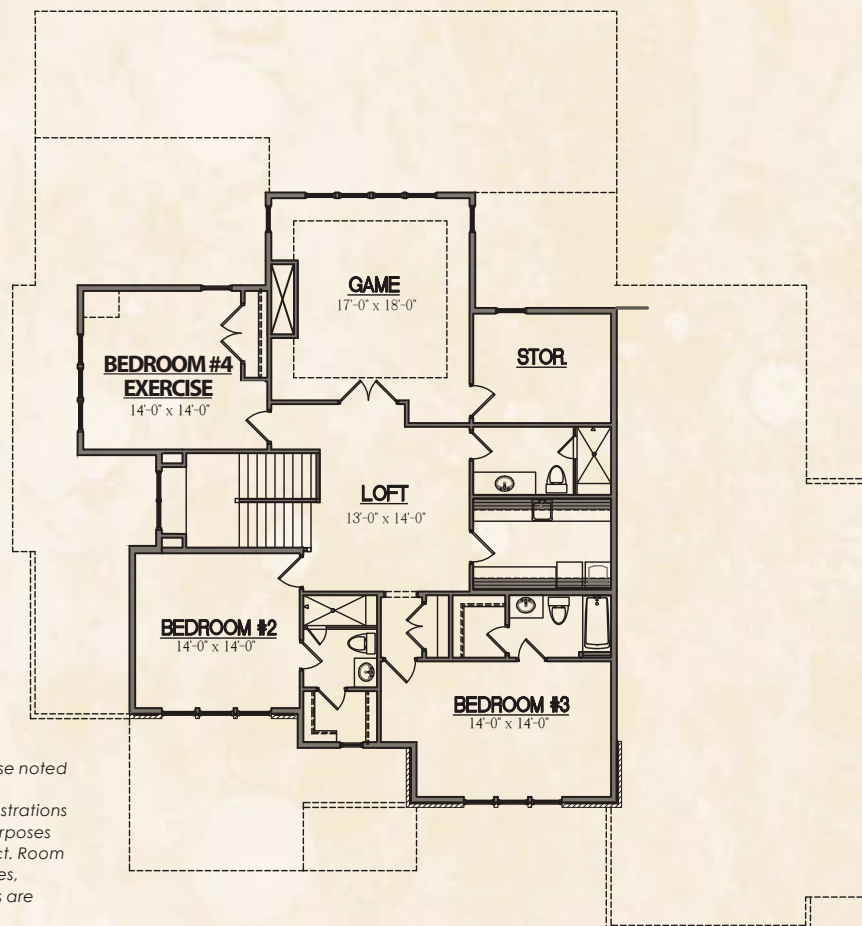


5029 Avalaire Pines Drive | Phase II Home Site #57 | 1.67 Acre Homesite
5087 Sq. Ft. Heated Area | 4 Bedrooms, 5 Full Baths and 1 Partial Baths
Designed for a Future Pool | 3 Car Garage

FIRST FLOOR



SECOND FLOOR



The builder reserves the right to revise noted specifications or substitute features, architectural details or materials. Illustrations and floorplans are for discussion purposes only and not part of a legal contract. Room sizes are approximate. Price, features, specifications, plans and elevations are subject to change without notice.