



AVALAIRE

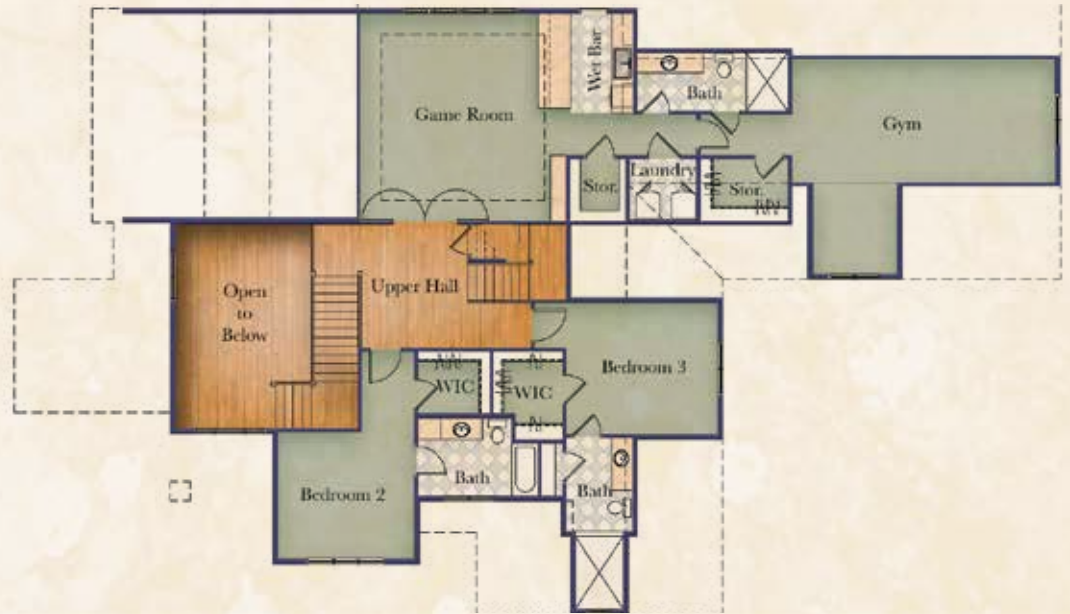


5004 Avalaire Pines Drive | Phase II Home Site #73 | 1.05 Acre Homesite
5437 Sq. Ft. Heated Area | Unfinished Walk-Up Attic | First Floor Master Suite
4 Bedrooms, 5 Full Baths and 1 Partial Baths | 4 Car Garage

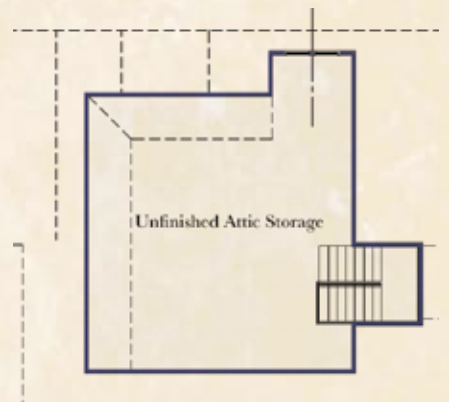


FIRST FLOOR

SECOND FLOOR



THIRD FLOOR



The builder reserves the right to revise noted specifications or substitute features, architectural details or materials. Illustrations and floorplans are for discussion purposes only and not part of a legal contract. Room sizes are approximate. Price, features, specifications, plans and elevations are subject to change without notice.